



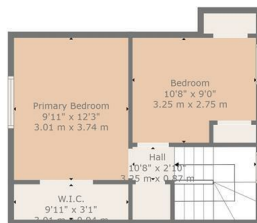
HEMMINGS HOMES

OFFERS OVER

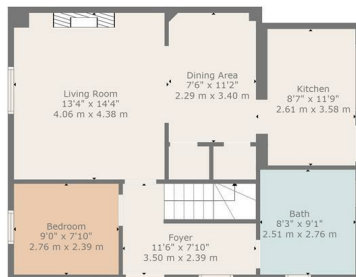
£210,000

Adele Street

Motherwell, ML1 2QD



Floor 2



Floor 1

TOTAL: 989 sq. ft, 92 m²
FLOOR 1: 652 sq. ft, 61 m², FLOOR 2: 337 sq. ft, 31 m²
WALLS: 91 sq. ft, 8 m²

Floor Plan Created by Cubicase App. Measurements Deemed Highly Reliable But Not Guaranteed.

3



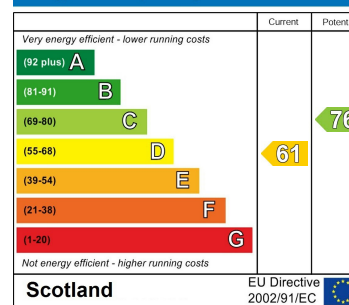
1



1



Energy Efficiency Rating



Agents Note: Whilst every care has been taken to prepare these particulars, they are for guidance purposes only. All measurements are approximate and are for general guidance purposes only and whilst every care has been taken to ensure their accuracy, they should not be relied upon and potential buyers/tenants are advised to recheck the measurements



HEMMINGS HOMES

OFFICE ADDRESS

376 Brandon Street
 Motherwell
 North Lanarkshire
 ML1 1XA

OFFICE DETAILS

01698 263413
enquiries@hemmingshomes.co.uk
hemmingshomes.co.uk